

Visit our website at:
Makeitincleveland.org

**Additional City of
Cleveland programs that can
help your business
include:**

*Economic Development Loan
Program*

*Working Capital Loan
Program*

*Municipal Small Business
Initiative*

*Neighborhood Retail
Assistance Program*

*Minority Construction Loan
Program*

Cleveland+
Akron+ Canton+ Youngstown



CITY OF CLEVELAND
Mayor Justin M. Bibb

For more information, please contact:

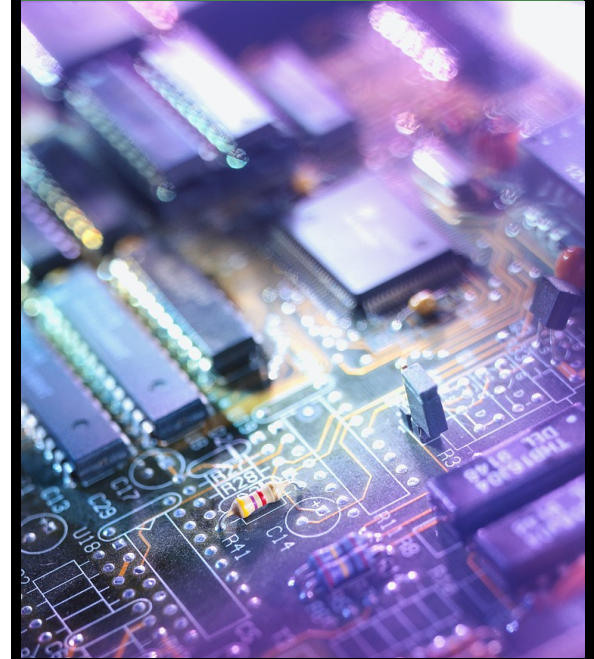
Robin Brown
Project Manager
Phone: (216) 664-3612
E-mail: rbrown@clevelandohio.gov

Visit our website at:
Makeitincleveland.org

*Built by Industry.
Inspired by Innovation.*



TECH DELTA PROGRAM



Providing an incentive for tech and lab improvements to attract new, as well as support current businesses in the City

— City of —
CLEVELAND
ECONOMIC DEVELOPMENT

Program Overview

The Tech Delta Program (TDP) is designed to supply financial assistance to tech and medical companies relocating to or expanding within the City of Cleveland.

TDP is specifically designed to support lab and tech build out beyond white-box space .

Grant assistance can be applied to new businesses creating five or more new jobs within the first year or for existing businesses with substantial employment.



Cardiolsight

Eligible Activities

- Tech Build out
- Lab space
- New Construction
- Renovation

***Built by Industry.
Inspired by Innovation.***

**Visit our website at:
Makeitincleveland.org**

Program Eligibility



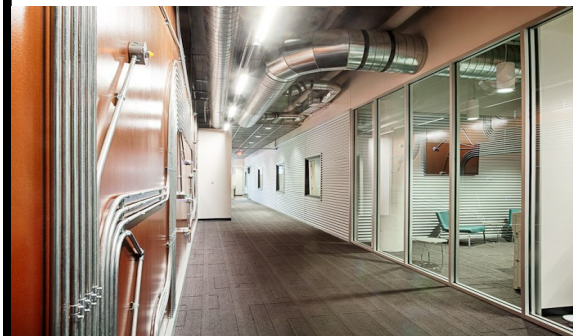
Cleveland Heart Lab

Eligible Applicants

- For-profit entities moving to/expanding in Cleveland that are creating at least five (5) new, full-time jobs in the City.
- Eligible applicants may receive grants of \$5 a square foot, up to \$50,000.

Ineligible Applicants

- Restaurants & Retail Businesses are not eligible for the Tech Delta Program.
- No “Big-Box” or retail mall developments.



RadioOne

Program Requirements

- Application Fee: \$100
- Applicant must execute a City Workforce Development Agreement. The Workforce Development Agreement works to match unemployed skilled workers with available positions.
- Applicants must be current on all income and property taxes at time of application and be up to date with Workers Compensation.
- Construction projects where City assistance exceeds \$100,000 must hire 20% Cleveland residents for the construction project and 4% of those employees must be certified as low-income residents.
- If the business receives other City funding and total City funds is more than \$50,000, all construction must then comply with City MBE/FBE/CSB regulations

Documentation Required

- Project Information
- Project Sources and Uses of funds
- Letter of Support from Ward Councilperson
- Annual Job Report